



# Final Event Information Guide

## 2026 Sharkskin SLSNSW IRB Championships 2 – 5 July 2026, Fingal Beach SLSC

The purpose of this guide is to advise and inform all IRB Premiership competitors and officials of important information for the 2026 Sharkskin SLSNSW IRB Championships.

Please also refer to the [Entry Circular available online for further information.](#)

### Table of Contents

Sharkskin.....	2
Fingal Beach SLSC and Parking.....	2
Competition Area (subject to change based on conditions) .....	3
Order of Events.....	3
Event Schedule .....	3
Scrutineering .....	4
Competition Priorities & Tiering of Events .....	4
Entry Conditions .....	5
Inshore Search and Rescue.....	5
Safety Considerations .....	6
Safety & Technical Infringements.....	6
Safety - PPE.....	6
Refueling.....	7
Heating Devices .....	7
First Aid.....	7
Warm-Ups.....	7
Contingency Location .....	7
Security .....	7
Protests & Appeals .....	8
Photography & Media .....	8
Order of Events - <i>subject to change</i> .....	9

## Sharkskin

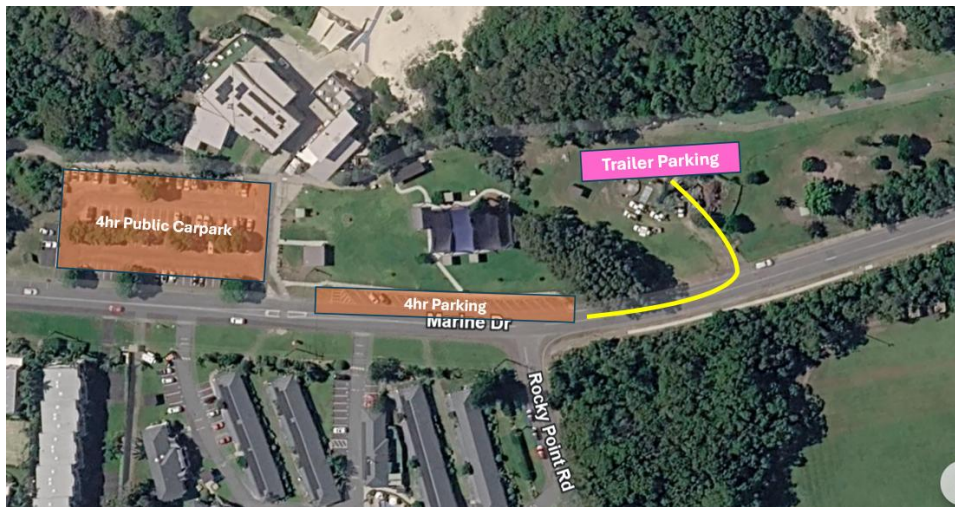
Sharkskin is sponsoring the 2026 Sharkskin NSW IRB Competition Season. Sharkskin will have a stall on site at Fingal Beach. Check out their merchandise [here](#).

## Fingal Beach SLSC and Parking

The 2026 NSW Sharkskin IRB Championships will be hosted by Fingal Beach SLSC.

### Event Parking

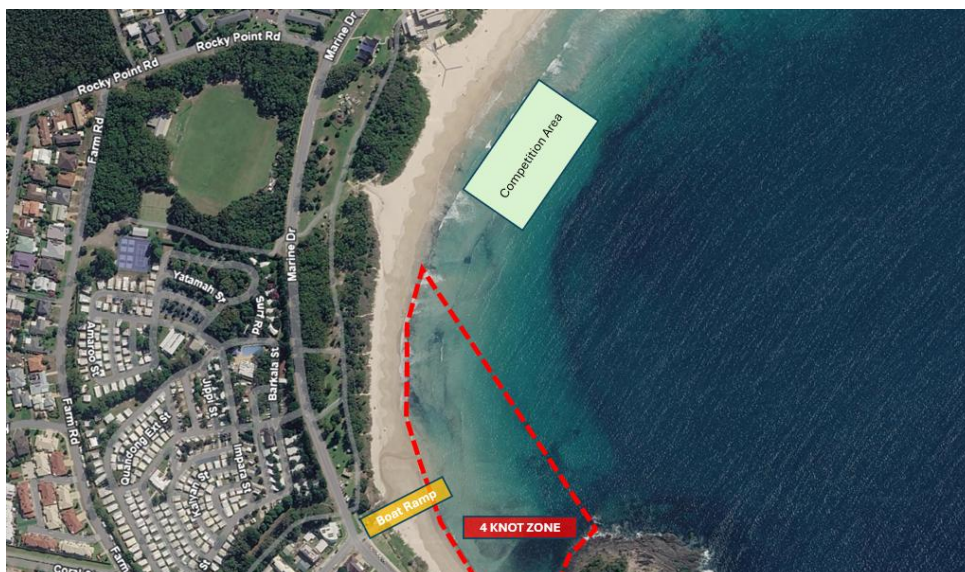
4hr restricted parking is available in the carpark adjacent to Fingal Beach SLSC and along Marine Drive. Free street parking is available on surrounding side streets.



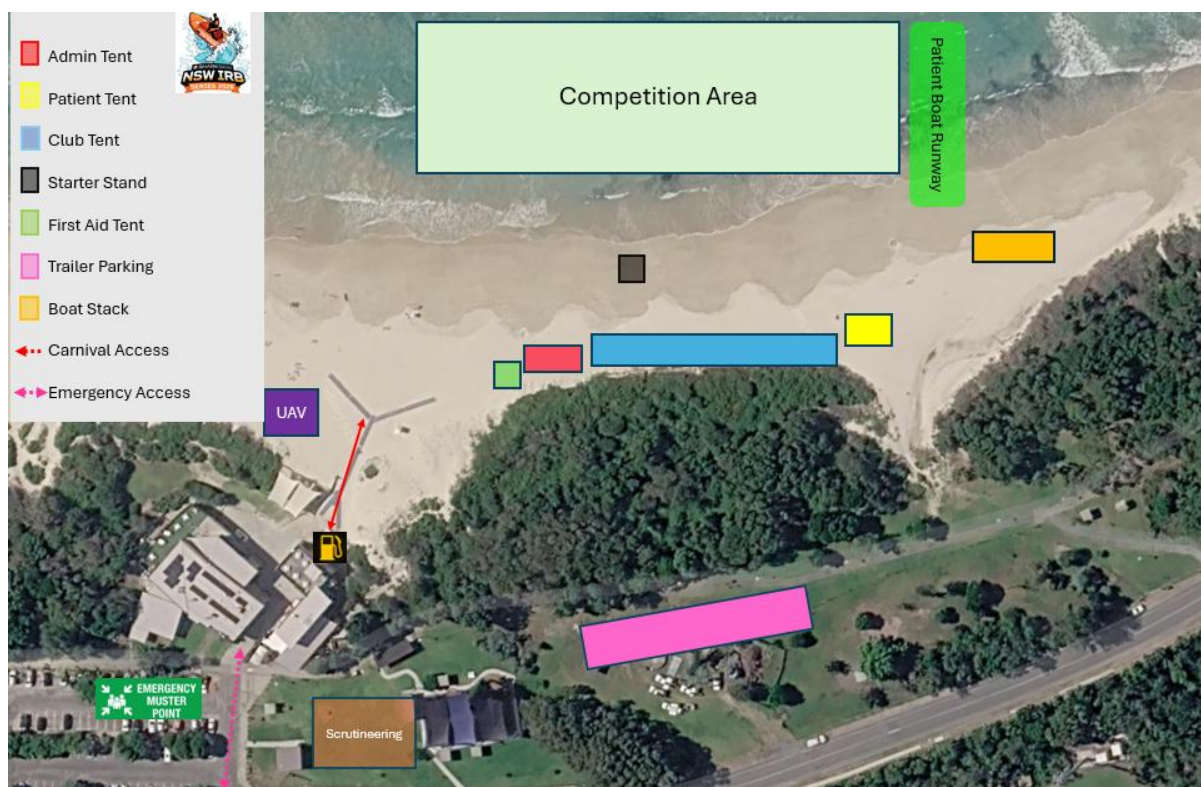
### Trailer Parking

Trailer Parking will be on the grass area as per the map below. Access is via Marine Drive, south of Rocky Point Road. Please be aware that this location is in a public area, without security fencing. All trailers, including gear left on trailers, are the responsibility and care of the Clubs. SLSNSW does not recommend craft being left on these trailers overnight.

Clubs are welcome to park and launch from the boat ramp (see map below) at Kiddies Corner. All IRB Drivers MUST comply with the 4-knot zones.



## Competition Area (subject to change based on conditions)



## Order of Events

The Order of Events for the Championships can be found at the end of this document.

## Event Schedule

Thursday 2 July	
08:30	Scrutineering Set Up
09:00	Officials Briefing
10:00	Scrutineering Commences
16:00	Scrutineering Concludes
Friday 3 July	
06:00	Officials Breakfast
06:30	Scrutineering Commences
07:00	Safety/Carnival Committee Meeting
07:30	Warm-Ups Permitted in <b>designated areas only</b>
07:30	Referees Briefing & Area/Sectional Toolbox Briefing
07:45	Team Managers Meeting
07:50	SMAR Role call & Briefing
08:00	Marshalling Commences
08:15	Competition Commences

Saturday 4 and Sunday 5 July	
06:00	Beach Setup
06:00	Officials Breakfast
06:15	Safety/Carnival Committee Meeting
06:30	Referees Briefing & Area/Sectional Toolbox Briefing
06:45	Warm-Ups Permitted in <b>designated areas only (advised via Team App on Friday)</b>
07:00	Team Managers Meeting
07:10	SMAR Role call & Briefing
07:15	Marshalling Commences
07:30	Competition Commences
16:00*	Competition Concludes
16:30*	Officials Debrief

**Note: The above event schedule is subject to change.**

**Presentation for the 2026 Sharkskin NSW IRB Championships will commence approximately 1hr after the conclusion of the last event on Sunday 5 July.**

### Scrutineering

Scrutineering of props, motors, hulls, and fuel cells will be conducted on Thursday 2 and Friday 3 July 2026. Scrutineering timeslots have been allocated to clubs. Clubs are to present all props, motors, hulls, and fuel cells that they intend to race with this Championships, noting 2 motors per hull and 2 props per motor (max of 10 props). Please arrive with all paperwork at least 30 minutes prior to scheduled time.

Please refer to the [Scrutineering Process Memo](#).

During competition, random scrutineering will take place in the competition area, and some clubs may be selected to present all their equipment to the scrutineering team for a detailed technical examination at the end of the day.

Any equipment (including fuel) that does not pass scrutineering requirements shall be referred to the Head Scrutineer and Carnival Referee for adjudication (in their absolute discretion).

If any IRB Gear and Equipment is found to be non-compliant, SLSNSW (or Officials on behalf thereof) has the right to investigate the circumstances and take the appropriate course of disciplinary action (as per the competition rules and surf sports manual). This may include (but not limited to), equipment being impounded and not being further used for the competition and the Club (in part or in total), being immediately suspended from competition.

### Competition Priorities & Tiering of Events

In order to meet timeframes, in their sole discretion the Championship Committee and the Championship Referees, a decision may be needed to adjust the order, draws and priority of events and priority of the Championships completion.

Adjustments to competition may include:

- Cuts in rounds in excess of the numbers as outlined in the Australian Surf Sports Manual 38th Edition
- Moving to block racing per discipline to ensure results in events

The priority/tiering of categories (from highest to least) is seen as:

- Opens
- U23's
- Masters
- Rookies

The priority tiering of events from (highest to least) is seen as:

- Surf Rescue
- Mass
- Teams
- Tube
- Relay

In the event of adverse conditions or time restraints impacting on the timely completion of the event, some age categories and events may be removed from the schedule as per the above.

### **Entry Conditions**

SLSNSW will be checking competitor's proficiency to ensure they are complying with relevant rules that are set out in the Entry Circular, Surf Sports Manual (SSM) and SLSA Policies.

Team Managers shall refer specifically to the following sections of the SSM:

- 3.3.2.4 Competitor Pre-Requisites (a-e)
- 3.3.2.5 Entry Limitations (a-g)

All entrants must meet SLSNSW award and proficiency requirements as detailed in the 2025/26 Proficiency Requirement, as well as the minimum patrol hours as per their membership type. Please refer to the Entry Circular. **It is a Clubs responsibility to check and ensure that all members comply.**

### **Handlers**

As a reminder and as per the Surf Sports Manual, handlers, as the date of competition are required to:

- I. Be a minimum of fifteen year of age as at the date of competition and be a currently proficient Bronze Medallion holder.
- II. Hold the IRB crewpersons certificate and be currently proficient as required by SLSA.
- III. Be a member of the same club or team as the crews and be entered at the competition (exemption may be given by the Referee for a member of another club or team to be a Handler provided that the Handler is entered in the competition).

### **Inshore Search and Rescue**

The inshore search and rescue team will **remain in place for the State Championships**. A compulsory roll call will follow the team managers' meeting on competition days.

SMAR swimmers are required for competition safety. ALL Clubs must provide at least 1 SMAR swimmer. **Please nominate your swimmers via the [Microsoft Form](#)**

## Safety Considerations

Event Attendees are asked to be mindful of the following safety considerations and risks:

- Ocean Swimmers or Surfers near & around the competition area
- Manual Handling of Gear & Equipment- Teams to use adequate people to lift & carry items.
- Limited Sand Area behind Competition Area – no tents or blockages to allow safe access for all involved.
- Cold weather expected – Please make sure you and your team plan accordingly by bringing appropriate wet suits, warm clothing, hot drinks or soup etc and layering up appropriately. ***It is the responsibility of both competitors and Team Managers to ensure their own and teams' safety in the predicted cold temperatures.***

**WARNING:** IRB competition can be inherently dangerous. IRB competition participants acknowledge that they are exposed to certain risks during IRB competition including but not limited to leg, spinal and neck injuries, physical exertion, contact with the IRB, temperature, weather and water conditions and even drowning. IRB competition participants acknowledge that accidents can and often do happen which may result in IRB competition participants being injured or even killed. All members, through their participation in IRB events agree, acknowledge and understand this warning and accept and assume the inherent risks in IRB competition.

## Safety & Technical Infringements

Attention is drawn to the SSM, Section 3.3.2.3 and relevant paragraphs:

- a) A strong emphasis will be placed on safe driving, crewing and patients' safety practices. All competitors must complete each event in a safe and controlled speed and manner or will face immediate disqualification from the event, and/or issue of a safety infringement and consideration for further penalties.
- b) A safety infringement shall be issued to any competitor deemed to have committed an unsafe practice. This will result in the immediate disqualification of the competitor and their entire team (ie., crew and patient/s) from the event in which the infringement occurred.
- c) If a competitor receives more than once safety infringement in any one competition, they shall be disqualified from the entire competition.

## Safety - PPE

Please refer to the Entry Circular in regard to:

- Personal Protective Equipment
- High Visibility Garments
- Helmets

To assist with judging, SLSNSW has replaced coloured lane vests with coloured rash shirts. Coloured lane rash shirts will be worn over the lifejacket. This will apply to the IRB Driver only. In the teams and mass events only the second (or finishing) driver will wear the rash vest and is a pre-requisite to completing the course as defined. No rash vest = no finish.

## **Refueling**

All refueling must be conducted in the approved area at Fingal Beach SLSC. No refueling is to be undertaken at trailers or on the beach.

## **Heating Devices**

The use of any heating device utilising combustible material inside and/or around club tents is **prohibited**.

## **First Aid**

Surf Life Saving Services (SLSS) will be providing First Aid during the event and will be operational from 6:45am on days of competition. Please refer to the event map for the precise location of the First Aid Tent.

## **Warm-Ups**

Warm-ups will commence 45 minutes prior to commencement of competition and will not be permitted within the competition area. As per the entry circular, competitors who enter the competition area and 'warm-up' will be deemed to have committed an unsafe practice. Warm-ups must only take place in the designated area as advised by the Carnival Referee. At all times, including when proceeding to and from warm-ups, drivers **MUST** comply with the 4-knot zones.

## **Contingency Location**

As per usual, the Competition Safety Committee will communicate any changes or update via TeamApp and Club Team Managers.

### **Aim and Principles of Relocation:**

The aim of relocating part or all of an event is to attempt to ensure that the competition is safely conducted within the set timeframe.

### **Assessment of Conditions and Investigation of Alternative Venues:**

The Competition Committee is responsible for assessing the situation and making a decision as to whether part or the entire event is relocated.

### **Relocation Timings:**

The decision to relocate part or all of an event will be made as early as possible.

If the event is to be relocated, a decision must be made as to the following:

- The events to be moved.
- The timings to commence the relocated events.
- The alternative location to be used.

## **Security**

Security will be in place on the beach on Friday & Saturday night. Tents may be left in place overnight but will need to be dropped.

Clubs are must to take all gear and equipment with them after competition on Sunday afternoon. SLSNSW and Fingal Beach SLSC accept no responsibility for loss, theft or damage to equipment.

Any person/s found stealing signage, or any equipment owned by SLSNSW or its sponsors will immediately be brought before a Carnival Disciplinary Committee or a SLSNSW Judiciary Meeting for possible further action.

Please note that automatic disqualification of the team/club from the Championship will occur if any member is found guilty of theft.

### **Protests & Appeals**

All protests shall be lodged with the appropriate Liaison Officer in the Area in accordance with the procedures set down in the current edition of the SLSA Surf Sports Manual and any subsequent bulletins and shall identify the specific sections/clauses in the Competition Manual and or event rules upon which the protest is based.

Protest Forms are available from the Liaison Officer. An "Appeals Fee" of \$150.00 must accompany all documentation when the process is officially submitted to the Appeals Committee for adjudication.

### **Photography & Media**

#### **Photography:**

As a condition of entry, all competitors agree to have photos and video taken during the Premiership Series and State Championships used for promotional material by SLSNSW. SLSNSW will not be issuing media/photography accreditation to team members or team management. Professional photographers will be attending, and material will be available via social media and to Clubs on request. Club Team Management are welcome to take photographs from outside the competition area. Go Pro's may only be used within the competition area on approved fittings and fixtures as set out in relevant SLSA bulletins.

#### **Media:**

No competitor, team manager, official or spokesperson for a club shall make media statements which could bring the Premiership Series or State Championships, its sponsors, or officials into controversy or disrepute. Such statements will be a breach of policy and could potentially result in sanctions against members involved. Please note that statements to the media regarding the Championships will be made only by authorised spokespeople.

#### **Drones:**

For the safety of competitors, officials and spectators SLSNSW prohibits the use of drones or Unmanned Aerial Vehicles (UAV) at these Championships by members and/or public unless approved by SLSNSW, 7 days prior to the event. The operator must supply an operations manual (including risk management plan), provide a copy of public liability insurance and comply with all Civil Aviation Safety Authority (CASA) requirements.

### Order of Events - *subject to change*

Event #	Events	Qualifiers
1-6	Open Female Mass (6 x Heats) (50) (2x9,4x8)	4 from each to Quarters (24)
7-14	Open Male Mass (8 x Heats) (65) (1x9,7x8)	4 from each to Quarters (32)
15-20	Open Female Rescue (6 x Heats) (54) (6x9)	4 from each to Quarters (24)
21-29	Open Male Rescue (9 x Heats) (78) (6x9,3x8)	4 from each to Quarters (36)
30-32	Open Female Tube (3 x Quarters) (20) (2x7,1x6)	4 from each to Semi (12)
33-35	Open Male Tube (3 x Quarters) (23) (2x8,1x7)	4 from each to Semi (12)
36-38	45+ Open Mass (3 x Quarters) (25) (1x9,2x8)	4 from each to Semi (12)
39-42	U23 Female Mass (4 x Quarters) (31) (3x8,1x7)	4 from each to Semi (16)
43-46	U23 Male Mass (4 x Quarters) (30) (2x8,2x7)	4 from each to Semi (16)
47-49	Open Female Mass (3 x Quarters) (24) (3x8)	4 from each to Semi (12)
50-53	Open Male Mass (4 x Quarters) (32) (4x8)	4 from each to Semi (16)
54-56	Open Female Teams (3 x Quarters) (26) (2x9,1x8)	4 From each to Semi (12)
57-60	Open Male Teams (4 x Quarters) (35) (3x9,1x8)	4 from each to Semi (16)
61-63	45+ Open Rescue (3 x Quarters) (25) (1x9,2x8)	4 from each to Semi (12)
64-67	U23 Female Rescue (4 x Quarters) (33) (1x9,3x8)	4 from each to Semi (16)
68-71	U23 Male Rescue (4 x Quarters) (31) (3x8,1x7)	4 from each to Semi (16)
72-74	Open Female Rescue (3 x Quarters) (24) (3x8)	4 from each to Semi (12)
75-78	Open Male Rescue (4 x Quarters) (36) (4x9)	4 from each to Semi (16)
79-80	45+ Open Tube (2 x Semi) (18) (2x9)	4 from each to Final (8)
81-82	35+ Male Tube (2 x Semi) (13) (1x7,1x6)	4 from each to Final (8)
83-84	U23 Female Tube (2 x Semi) (16) (2x8)	4 from each to Final (8)
85-86	U23 Male Tube (2 x Semi) (17) (1x9,1x8)	4 from each to Final (8)
87-88	Open Female Tube (2 x Semi) (12) (2x6)	4 from each to Final (8)
89-90	Open Male Tube (2 x Semi) (12) (2x6)	4 from each to Final (8)
91-92	45+ Open Mass (2 x Semi) (12) (2x6)	4 from each to Final (8)
93-94	35+ Male Mass (2 x Semi) (16) (2x8)	4 from each to Final (8)
95-96	U23 Female Mass (2 x Semi) (16) (2x8)	4 from each to Final (8)
97-98	U23 Male Mass (2 x Semi) (16) (2x8)	4 from each to Final (8)
99-100	Rookie Mass (2 x Semi) (12) (2x6)	4 from each to Final (8)
101-102	Open Female Mass (2 x Semi) (12) (2x6)	4 from each to Final (8)
103-104	Open Male Mass (2 x Semi) (16) (2x8)	4 from each to Final (8)
105-106	U23 Female Teams (2 x Semi) (11) (1x6,1x5)	4 from each to Final (8)
107-108	U23 Male Teams (2x Semi) (14) (2x7)	4 from each to Final (8)
109-110	Open Female Teams (2 x Semi) (12) (2x6)	4 from each to Final (8)
111-112	Open Male Teams (2 x Semi) (16) (2x8)	4 from each to Final (8)
113-114	45+ Open Rescue (2 x Semi) (12) (2x6)	4 from each to Final (8)
115-116	35+ Male Rescue (2 x Semi) (16) (2x8)	4 from each to Final (8)
117-118	U23 Female Rescue (2 x Semi) (16) (2x8)	4 from each to Final (8)
119-120	U23 Male Rescue (2 x Semi) (16) (2x8)	4 from each to Final (8)

121-122	<b>Rookie Rescue (2 x Semi) (14) (2x7)</b>	<b>4 from each to Final (8)</b>
123-124	<b>Open Female Rescue (2 x Semi) (12) (2x6)</b>	<b>4 from each to Final (8)</b>
125-126	<b>Open Male Rescue (2 x Semi) (16) (2x8)</b>	<b>4 from each to Final (8)</b>
127-128	<b>Open IRB Relay (2 x Semi) (15) (1x8,1x7)</b>	<b>4 From each to Final (8)</b>

129	<b>45+ Open Tube Final (8)</b>	
130	<b>35+ Female Tube Final (7)</b>	
131	<b>35+ Male Tube Final (8)</b>	
132	<b>U23 Female Tube Final (8)</b>	
133	<b>U23 Male Tube Final (8)</b>	
134	<b>Open Female Tube Final (8)</b>	
135	<b>Open Male Tube Final (8)</b>	
136	<b>45+ Open Mass Final (8)</b>	
137	<b>35+ Female Mass Final (8)</b>	
138	<b>35+ Male Mass Final (8)</b>	
139	<b>U23 Female Mass Final (8)</b>	
140	<b>U23 Male Mass Final (8)</b>	
141	<b>Rookie Mass Final (8)</b>	
142	<b>Open Female Mass Final (8)</b>	
143	<b>Open Male Mass Final (8)</b>	
144	<b>45+ Open Teams Final (9)</b>	
145	<b>35+ Female Teams Final (3)</b>	
146	<b>35+ Male Teams Final (10)</b>	
147	<b>U23 Female Teams Final (8)</b>	
148	<b>U23 Male Teams Final (8)</b>	
149	<b>Open Female Teams Final (8)</b>	
150	<b>Open Male Teams Final (8)</b>	
151	<b>45+ Open Rescue Final (8)</b>	
152	<b>35+ Female Rescue Final (8)</b>	
153	<b>35+ Male Rescue Final (8)</b>	
154	<b>U23 Female Rescue Final (8)</b>	
155	<b>U23 Male Rescue Final (8)</b>	
156	<b>Rookie Rescue Final (8)</b>	
157	<b>Open Female Rescue Final (8)</b>	
158	<b>Open Male Rescue Final (8)</b>	
159	<b>IRB Relay Final (8)</b>	